

**ADMINISTRATIVE
UPDATES
2017**

Sara Clark, MS, OTRL
Academic Fieldwork Coordinator
Western Michigan University

Nancy Vandewiele Milligan, PhD, OTRL, FAOTA, FMIOTA
Director
University of Michigan - Flint

Objectives

- MOTEC Updates
- MiOTA Updates
- AOTA Updates
- ACOTE Update
- OJOT Update

MOTEC

**Michigan
Occupational Therapy
Education Consortium**

MOTEC

**2019 - Level II Fieldwork
Reservation Request Process**

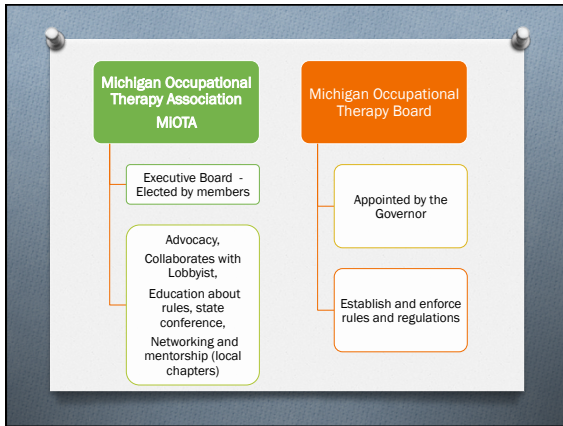
- MOTEC Statement
- January 1st, 2018:**
 - On or after this date all academic programs will send out their Level II Fieldwork requests for the entire **2017 calendar year**
- February 15th, 2018:**
 - Please HOLD all requests until after this date to respond to any academic program
 - Please give all academic programs equitable consideration
 - Please consider Michigan academic programs requests before out-of-state academic requests

Level I Fieldwork Requests

- Each academic program has a unique time frame, duration and focus for Level I Fieldwork

MiOTA

**Michigan
Occupational Therapy
Association**



MiOTA Website

- www.mi-ota.com
- MOTEC information
- Information on free webinars for CE credit
- Local Chapter Information
 - Meeting dates/times and meeting minutes
- Advocacy Information
- Job postings
- Advertisements
- Research tab

MiOTA Membership

- Please join or renew!

MiOTA Chapter Groups

- UP
- Lansing
- Flint (**New in 2017)
- West
- Southwest
- Huron Valley
- Detroit
- Northwest – Traverse City (**New for 2018)

OT Lansing Lobby Day

- April 2018
- Date TBD
- Looking for volunteers to help – contact MiOTA office

MI OT/OTA General Rules and Regulations Update

- In effect: October 19th, 2017
- New: Continuing Education Requirement
 - 20 hours (only 10 online)
 - Pain = 1 hour every renewal period
 - Human Trafficking = 1 time for entire license lifetime

MI – LARA MI OT/OTA License

- o License by examination (first time license) and license by endorsement:
- o Jurisprudence exam
- o \$95.95 fee
- o Fingerprinting/background check

AOTA

American Occupational Therapy Association

AOTA Vision 2025

- o 2018 – 2025
- o *“Occupational therapy maximizes health, well-being and quality of life for all people, populations, and communities through effective solutions that facilitate participation in everyday living.”*
- o Pledge – on AOTA website

AOTA Website Resources

- o 2017 - CPT Codes Webinar
- o ICD-10 Resources
- o Fieldwork Education section
- o Ethics section

Update: new AOTA Fieldwork Performance Evaluation

- o 2015: Subcommittee of the COE completed revisions of the FWPE content items after surveying stakeholders
- o 2016 – 2017: AOTA appointed the University of Illinois at Chicago to validate the new FWPE:
 - o Phase I = Content Validity
 - o Phase II = Pilot Testing for Internal Scale Validity
(electronic version will be developed for new form)

AOTA’s *Fieldwork Educator Certificate Program Workshop (FWECP)*

Voluntary certification:

- o 2 day course: 15 contact hours for continuing education
- o Focus on “best practice” for fieldwork education
- o Topics include:
 - o Guidelines for OT student supervision
 - o New OT Practice Framework (2014) review
 - o **AOTA’s online evidence based practice resources**
 - o “Tool Box” for shaping clinical reasoning skills
 - o Fieldwork Performance Evaluation (FWPE)

**2017 - 2018 AOTA FWECP
Dates and Locations**

Rush Copley Medical Center – Aurora, IL
January 13 – 14th, 2018

Spectrum Health – Grand Rapids, MI
February 3rd - 4th, 2018

Contact Sara Clark with questions about registration:
sara.clark@wmich.edu

**2018
AOTA National Conference**

Salt Lake City, UT:
April 19th – April 21st, 2018

ACOTE

**Accreditation Council
for Occupational
Therapy Education**

**2015
Entry Point to Our Profession**

Occupational Therapist	Occupational Therapy Assistant
Master's Degree	Associate Degree
Doctoral Degree	Baccalaureate Degree

August 2015 ACOTE Decision

**August - 2017
Entry Point to Our Profession**

Occupational Therapist	Occupational Therapy Assistant
Doctoral Degree By July 1 st , 2027	Baccalaureate Degree By July 1 st , 2027

August 2017 ACOTE Decision

**October – 2017
Entry Point to Our Profession**

- ACOTE holds OTA mandate in abeyance
- Public forum held at AOTA Academic Leadership Council Meeting – Fort Worth, TX, Oct. 25th, 2017

Proposed ACOTE Standards

- o Proposed in 2016, Call for comments in 2017
- o Four tracks:
 - o Doctoral degree
 - o Master's degree
 - o Baccalaureate degree
 - o Associate degree

Changes - Proposed ACOTE Standards

- o C.1.2:
Ensure that fieldwork objectives for all experiences include a mental health objective.

Changes - Proposed ACOTE Standards

- o C.1.3: ~~Demonstrate~~ **Document** that academic and fieldwork educators ~~collaborate~~ **agree** on established fieldwork objectives **prior to the start** of the fieldwork experience and communicate with the student and fieldwork educator about progress and performance **throughout** the ~~during~~ fieldwork experience.

Changes - Proposed ACOTE Standards

- o C.1.9: Document that a ~~maximum~~ **minimum** of 40 hours OTA, 80 hours OT, of Level I ~~fieldwork experiences~~ are provided to students and not substituted for any part of Level II fieldwork experience. Ensure that Level I ~~fieldwork experience~~ enriches didactic coursework through directed observation and participation in selected aspects of the occupational therapy process, and includes mechanisms for formal evaluation of student performance.

Changes - Proposed ACOTE Standards

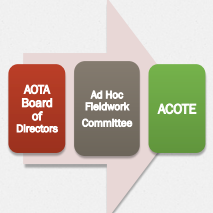
- o C.1.9.: Continued . . .
The Level I experience must be met through a combination of the following instructional methods:
 - o Simulation
 - o Standardized patients
 - o Faculty practice
 - o Faculty-led site visits
 - o Consumer instruction
 - o Supervision by a fieldwork educator in a practice environment

Changes - Proposed ACOTE Standards

- o C.1.14: Level II Fieldwork
Ensure **Document and verify** that the student is supervised by a currently licensed or otherwise regulated occupational therapist/assistant who has a minimum of one year full-time practice experience **prior to the initiation** of the Level II fieldwork experience.
Ensure that the student supervisor is adequately prepared to serve as fieldwork educator **prior to** the Level II fieldwork experience.

Potential Alternative Fieldwork Models

- **Level I Experiences**
 - Initial experiential learning
 - Facilitated by the academic program
- **Mentored Experience**
 - **Level II Fieldwork**
 - **16 Weeks = OT**
- **First Year Practitioner-OT Residency**
 - Post-graduation




The diagram consists of three rectangular boxes arranged horizontally, connected by a large, light-colored arrow pointing from left to right. The first box is red and contains the text 'AOTA Board of Directors'. The second box is grey and contains the text 'Ad Hoc Fieldwork Committee'. The third box is green and contains the text 'ACOTE'.

OJOT

Open Journal of Occupational Therapy

OJOT: *Open Journal of Occupational Therapy*

- Open access journal: electronic scholarly journal
- Free online!!!
- Peer-reviewed
- Focus: applied research, practice and education
- Quarterly publications
- **Editor-in-Chief:** Diane Powers Dorette, Ph.D., OTL (Western Michigan University)
- **Associate Editor:** Allison K. Fox, MS, OTR/L
- <http://scholarworks.wmich.edu/ojot/>



The logo for OJOT features a stylized, grey-toned figure of a person in a dynamic, athletic pose, possibly representing a therapist or a client. The figure is composed of various geometric shapes and lines, giving it a modern, abstract appearance.

Thank you for your vested interest in fieldwork education!

MOTEC