

ADMINISTRATIVE UPDATES 2018

Sara Clark, MS, OTRL
Academic Fieldwork Coordinator
Western Michigan University

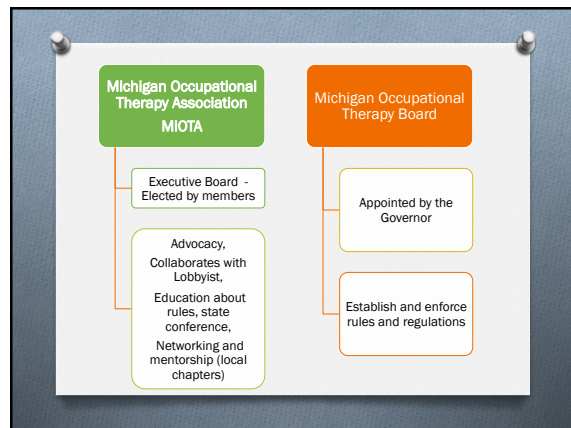
Nancy Vandewiele Milligan, PhD, OTRL, FAOTA, FMIOTA
Director
University of Michigan - Flint

Objectives

- MiOTA Updates
- AOTA Updates
- ACOTE Updates
- MOTEC Updates
- OJOT Update

MiOTA

**Michigan
Occupational Therapy
Association**



MiOTA Website

- www.miota.org
- MOTEC information
- Information on free webinars for CE credit
- Local Chapter Information
 - Meeting dates/times and meeting minutes
- Advocacy Information
- Job postings
- Advertisements
- Research tab

MiOTA Membership

- Please join or renew!

MiOTA Chapter Groups

- oUP
- oLansing
- oFlint
- oWest
- oSouthwest
- oHuron Valley
- oDetroit
- oNorthwest - Traverse City (**New for 2018)

OT Lansing Lobby Day

- oFebruary 27th, 2018
- oTalking Points:
 - oHabilitation
 - oTelehealth
 - oAuto No-Fault

MiOTA 2018 Conference

Embassy Suites Hotel: Livonia, MI

- oFriday October 12th: Evening Registration/
Welcome Reception
- oSaturday October 13th: Full Conference Day/
Poster Sessions/Awards Ceremony
- oSunday October 14th:
 - o8 AM - 10 AM Pain and Human Trafficking
 - o10 - 11:30 = Business Meeting

MI OT/OTA General Rules and Regulations Update

- oIn effect: October 19th, 2017
- oNew: Continuing Education Requirement
 - o20 hours (only 10 online)
 - oPain = 1 hour every renewal period
 - oHuman Trafficking = 1 time for entire license lifetime

Human Trafficking Requirement: Renewal Timeline

- oLicencees renewing in 2018: must complete requirement by 2020 renewal
- oRenewals in 2019 === by 2021 renewal
- oRenewals in 2020 === by 2022 renewal
- oBeginning October 19th, 2022, requirement will be mandatory for initial licensure

Continuing Education Requirement: Renewal Timeline

- oLicencees renewing in 2019 === by renewal in 2021
- oRenewals in 2020 === by 2022 renewal

**MI – LARA
MI OT/OTA License**

- o License by examination (first time license) and license by endorsement:
- o Jurisprudence exam at PSI Center
- o \$95.95 fee
- o Fingerprinting/background check

MiOTA joins SEAC!

- o **Special Education Advisory Committee (SEAC)** of Michigan
- o MiOTA Delegate:
 - o Donna Case, Northville Public Schools
 - o casedo@northvilleschools.org

MI - TriAlliance Update

- o **Mandatory Reporting:**
- o HB 5444 (Rep Jeff Yaroch, R - District 33, Richmond) and HB 5541 (Rep Roger Hauck, R - District 99, Mt.Pleasant) both require PTs/PTAs to be added to the list of mandatory reporters for suspected child neglect or child abuse.
- o Note: The MI Child Protection Law provides civil and criminal immunity for someone making a report in good faith. The identity of the reporting person is confidential under the law under most circumstances.

AOTA

**American
Occupational Therapy
Association**

**AOTA
Vision 2025**

- o 2018 – 2025
- o *“Occupational therapy maximizes health, well-being and quality of life for all people, populations, and communities through effective solutions that facilitate participation in everyday living.”*
- o Pledge – on AOTA website

AOTA Website Resources

- o Evidence Based Practice section!!!
- o 2017 - CPT Codes Webinar
- o ICD-10 Resources
- o Fieldwork Education section
- o Ethics section
- o OTA section

**Update: new
AOTA
Fieldwork Performance Evaluation**

- 2015: Subcommittee of the COE completed revisions of the FWPE content items after surveying stakeholders
- 2016 – 2018: AOTA appointed the University of Illinois at Chicago to validate the new FWPE:
 - Phase I = Content Validity
 - Phase II = Pilot Testing for Internal Scale Validity
(electronic version will be developed for new form)

AOTA FWPE Scale

Number	New Description	Old Description
4	Exemplary	Exceeds Standards
3	Proficient	Meets Standards
2	Emerging	Needs Improvement
1	Unsatisfactory	Unsatisfactory

AOTA new FWPE

- Next Steps in 2018:
 - AOTA task force to determine:
 - cut-off score criteria for pass/fail
 - electronic format
 - dissemination and training

AOTA's Fieldwork Educator Certificate Program Workshop (FWECP)

Voluntary certification:

- 2 day course: 15 contact hours for continuing education
- Focus on "best practice" for fieldwork education
- Topics include:
 - Guidelines for OT student supervision
 - New OT Practice Framework (2014) review
 - AOTA's online evidence based practice resources
 - "Tool Box" for shaping clinical reasoning skills
 - Fieldwork Performance Evaluation (FWPE)

**2018 - 2019 AOTA FWECP
Dates and Locations
TBD**

- Contact Sara Clark:
sara.clark@wmich.edu

AOTA National Conference

- 2018 - Salt Lake City, UT:
April 19th – April 21st, 2018
- 2019 - New Orleans, LA
April 4th – April 7th, 2019

Therapy Cap Repealed After 20 Years!

- February 2018:
 - Permanent repeal of the cap on Medicare outpatient therapy services

AOTA Statement: OTA Medicare Part B Payment Change

One of these provisions made changes to the way occupational therapy assistants (OTAs) and physical therapist assistants (PTAs) are paid under Medicare Part B. Starting in 2022, after 2 years of data gathering, OTA and PTA services will be paid at 85% of what is paid for services provided by a therapist. This is similar to the current approach to payment for physician assistants (PAs) and nurse practitioners (NPs) who are in general paid 85% of what physicians are paid. AOTA successfully opposed this payment change when it was proposed in the past.

ACOTE

Accreditation Council for Occupational Therapy Education

2015

Entry Point to Our Profession

Occupational Therapist	Occupational Therapy Assistant
Master's Degree	Associate Degree
Doctoral Degree	Baccalaureate Degree

August 2015 ACOTE Decision

August - 2017

Entry Point to Our Profession

Occupational Therapist	Occupational Therapy Assistant
Doctoral Degree	Baccalaureate Degree
By July 1 st , 2027	By July 1 st , 2027

August 2017 ACOTE Decision

October - 2017

OTA Entry Point to Our Profession

ACOTE holds OTA mandate in abeyance

OT Entry Point: National Conversations

- o AOTA Board of Directors:
 - o Led by Amy Lamb – AOTA President
- o OT Connections Forum (ongoing)
- o National Conversation Date:
 - o Tuesday May 15th = 7:30 PM EDT
- o Member Survey launched:
 - o May 21st – June 3rd, 2018

Proposed ACOTE Standards

- o Proposed in Feb. 2016
- o Draft I – Feb. 2017
- o Draft II – Sept. 2017
- o Draft III – Jan. 2018
- o Aug. 2018 – possible adoption by ACOTE
- o July 1st, 2020 = possible implementation date
- o Four tracks:
 - o Doctoral degree
 - o Master's degree
 - o Baccalaureate degree
 - o Associate degree

Changes - *Proposed* ACOTE Standards

- o C.1.3: ~~Demonstrate~~ **Document** that academic and fieldwork educators ~~collaborate~~ **agree** on established fieldwork objectives **prior to the start** of the fieldwork experience and communicate with the student and fieldwork educator about progress and performance **throughout** the ~~during~~ fieldwork experience.
- o Ensure that fieldwork objectives for all experiences include a mental health objective

Changes - *Proposed* ACOTE Standards

- o C.1.9.:
- o The Level I experience must be met through one or more of the following instructional methods:
 - o Simulation
 - o Standardized patients
 - o Faculty practice
 - o Faculty-led site visits
 - o Supervision by a fieldwork educator in a practice environment

Changes - *Proposed* ACOTE Standards

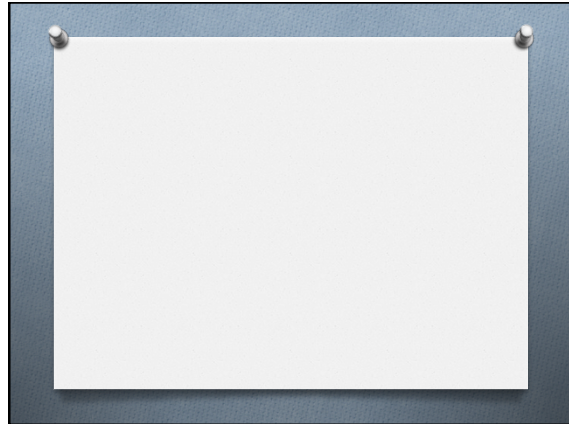
- o C.1.11: Level II Fieldwork
- o ~~Ensure~~ **Document and verify** that the student is supervised by a currently licensed or otherwise regulated occupational therapist/assistant who has a minimum of one year full-time practice experience **prior to the onset** of the Level II fieldwork.
- o Ensure that the student supervisor is adequately prepared to serve as fieldwork educator **prior to** the Level II fieldwork.

MOTEC

Michigan Occupational Therapy Education Consortium

MOTEC 2020 - Level II Fieldwork Reservation Request Process

- o MOTEC Statement
- o **January 1st, 2019:**
 - o On or after this date all academic programs will send out their Level II Fieldwork requests for the entire **2020 calendar year**
- o **February 15th, 2019:**
 - o Please HOLD all requests until after this date to respond to any academic program
 - o Please give all academic programs equitable consideration
 - o Please consider Michigan academic programs requests before out-of-state academic requests



Level II Fieldwork Schedule OT

Jan	Feb	Mar	Apr	May	Jun	Jul	Aug	Sep	Oct	Nov	Dec
BGS	BGS	BGS	BGS	BGS	BGS						
					DAV	DAV	DAV	DAV	DAV	DAV	DAV
EMU	EMU	EMU	EMU	EMU	EMU						
GVS	GVS	GVS	GVS	GVS	GVS						
				SVSU	SVSU	SVSU	SVSU	SVSU	SVSU	SVSU	
WSU	WSU	WSU				WSU	WSU	WSU	WSU	WSU	WSU
WMU	WMU	WMU	WMU	WMU	WMU	WMU	WMU	WMU	WMU	WMU	WMU

Key:
BGS = Baker Center for Graduate Studies, Flint
DAV = Davenport University, Grand Rapids
EMU = Eastern Michigan University, Ypsilanti
GVS = Grand Valley State University, Grand Rapids
SVSU = Saginaw Valley State University, Saginaw
WSU = Wayne State University, Detroit
WMU = Western Michigan University, Kalamazoo & Grand Rapids

Level II Fieldwork Schedule: OTA

Jan	Feb	Mar	Apr	May	Jun	Jul	Aug	Sep	Oct	Nov	Dec
								BAP	BAP	BAP	BAP
									BCM	BCM	BCM
								BCO	BCO	BCO	BCO
GRC	GRC	GRC	GRC								
MaC	MaC	MaC	MaC	MaC							
					MoC	MoC	MoC	MoC	MoC	MoC	

BAP = Baker College Allen Park
BCM = Baker College Muskegon
BCO = Baker College Owosso
GRC = Grand Rapids Community College
MaC = Macomb Community College, Clinton Township
MoC = Mott Community College, Fenton

Level I Fieldwork Requests

- o Each academic program has a unique time frame, duration and focus for Level I Fieldwork

MOTEC Programs: Move to the OTD

- o First Program: University of Michigan – Flint
- o Other OT programs currently working on curriculum mapping for transition timeline

OJOT

Open Journal of
Occupational Therapy

OJOT: *Open Journal of
Occupational Therapy*

- Open access journal: electronic scholarly journal
 - Free online!!!
- Peer-reviewed
- Focus: applied research, practice and education
- Quarterly publications
- Editor-in-Chief: Diane Powers Dirette, Ph.D., OTL
(Western Michigan University)
- Associate Editor: Allison K. Fox, MS, OTR/L
- <http://scholarworks.wmich.edu/ojot/>



Thank you for your vested
interest in fieldwork
education!

MOTEC